

HARLO®

HP6500 ROUGH TERRAIN FORKLIFT - 4WD



HARLO – since 1958 – The Industry Leader in Rough Terrain Forklifts Versatile & Innovative

HARLO earned the coveted reputation for manufacturing robust and reliable forklifts. Our forklifts are designed for rough terrain and have the reputation of providing results in tough conditions. You'll be hard-pressed to find anything else that can stand up to or even come close to a **HARLO**. The **HP6500** is the workhorse of the product line. With a large range of mast heights and configurations, the size and shape of the load is endless.

Standard Options

When you want the fastest on the job site at **27.4 mph**, or utilizing our **generous 35 GPM main pump** to lift at **96.3 fpm (15' 2 stage mast)** and **144.4 fpm (22' 3 stage mast)**, multitasking with amazing agility at **11.5" of ground clearance**, turning at a **10'7" radius**, **HARLO** is second to none! The internal wet brake and holding brake give stopping and holding power for all applications.

Exceptional Features

Smooth shifting is accomplished with our 4-speed manual transmission. Standard mast options of 15' two-stage and 22' three-stage lift your load with ease. The John Deere 74HP Diesel engine is low maintenance, fuel efficient, provides plenty of power, and has faster response times.

HP6500 Rough Terrain Forklift Specifications

Engine

Model	John Deere – 4045TI530
Type	Tier 4 Final Emission Certified
Cylinders	4 Cycle Turbocharged Diesel
Displacement	4
Fuel Injection	275 CID
Fuel	Electronic
Tank Capacity	Ultra Low Sulfur Diesel
Cooling	24 Gallons
Max Speed (eng)	Liquid Cooled
Idle Speed (eng)	2400 RPM
Horse Power	900 RPM
Maximum Torque	74 HP @ 2400 RPM
Water Pump Style	224 ft/lb @ 1600 RPM
Engine Oil	Integral
	SAE 15-W40



Mast

Forward Tilt	34 Degrees
Backward Tilt	10 Degrees
Side Shift	6" Total - 3" Left / 3" Right
Load Cushioning	Optional Accumulator

Tires

Front	16.9 - 24 (12 ply)
Rear	12 - 16.5 (10 ply)

Mast Configurations

Lift Height	Carriage Type	Carriage Width	Stages	Lowered	Extended	Capacity @ 24" Load Center	4WD Weight
15' Roller	ITA or Swing	60", 72", 84", 96"	2	125"	212"	6500lbs to 15'	13,489 lbs
22' Roller	ITA or Swing	60", 72", 84"	3	125"	300"	6500lbs to 12' 4500lbs to 15' 2500lbs to 22'	14,063 lbs

Electrical

Voltage	12 Volts
Alternator	95 Amps
Battery	950 CCA
Power Plugs	12V (Single) USB (Dual)



Warning Lights

Equipped with digital screen

Audible Alarm

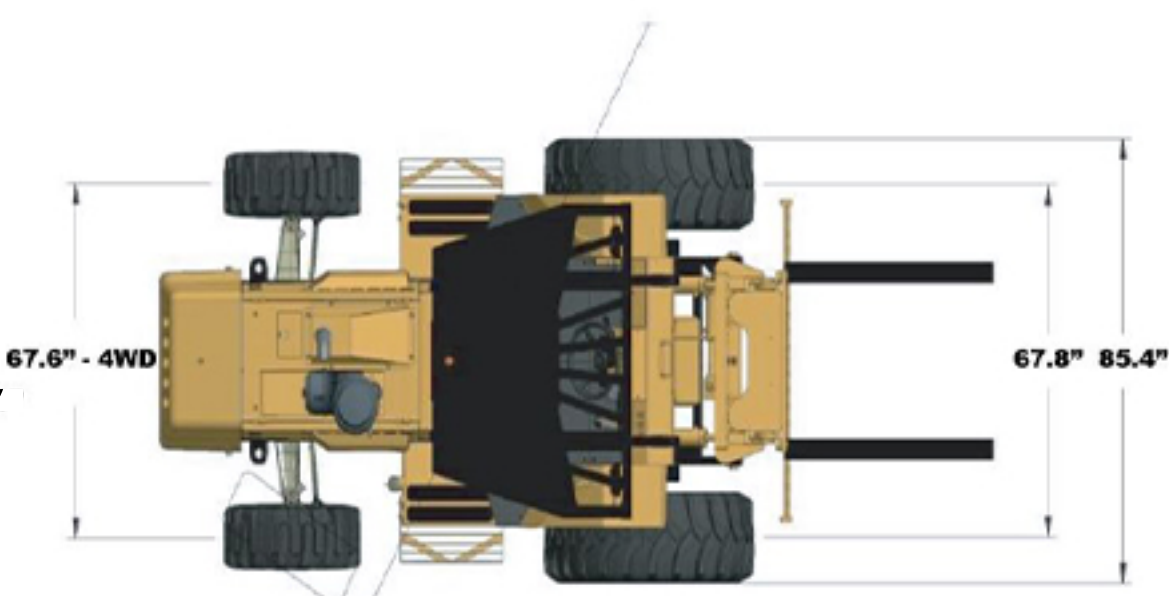
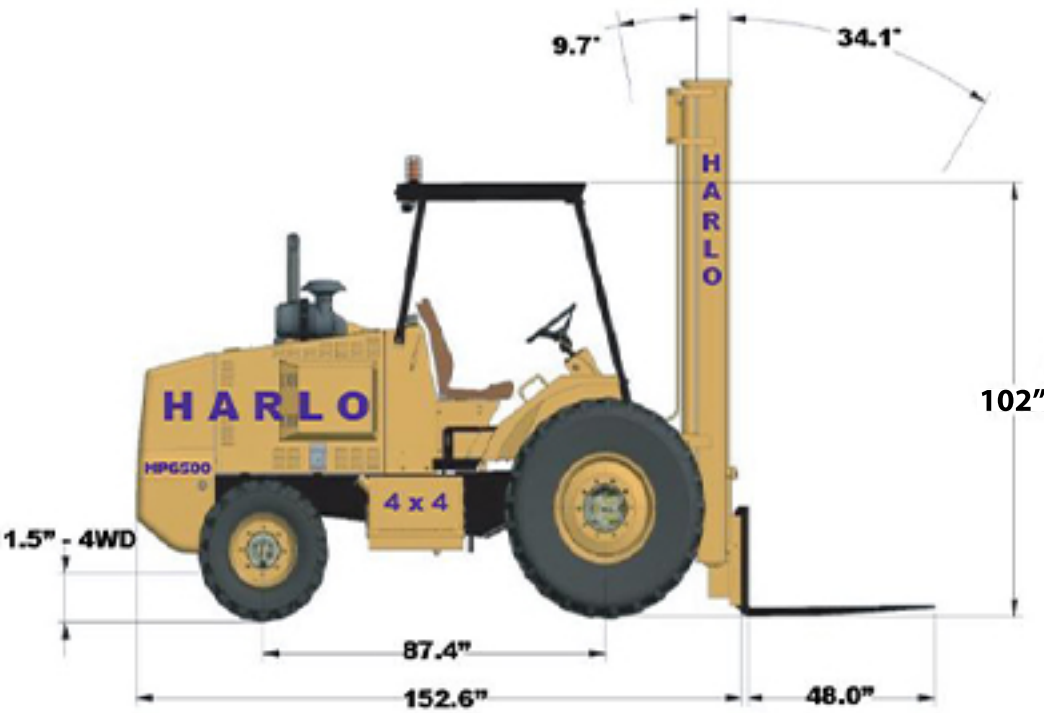
Backup Alarm - HORN

Operator Environment

Standard Safety: Adjustable Seat Cushion – Rear View Mirror – Seatbelt
– FOP Overhead Guard – See-thru Mast – A.N.S.I. B56.6 Safety Compliant

Gauges

Fuel Level – Hour Meter – Voltmeter – Coolant Temperature – Tachometer – Oil Pressure



Turning Radius
 4WD with brakes 10'-7"
 4WD without brakes 12'-9"



Dual Battery



Bin Clamp



LED Light Guards



Engine Air PreCleaner



Accumulator



Swivel / Suspension Seat



4 Forks



Integrated Fork Positioner



Turn Signal Package



Fire Extinguisher



Enclosed Cab



Air Conditioner



Cab Heater



Radio



Engine Block Heater

Harlo.com



Harlo Facebook

